

the Wheelagram



Materials Cleaning Systems Division
Wheelabrator-Frye Inc.

VOL. VI NO. 4
APRIL, 1982

WFI'S RAY LELIAERT RECEIVES AFS AWARD . . .

Technical Director **Ray Leliaert** is this year's recipient of the American Foundrymen's Society Award of Scientific Merit. Ray was presented the award April 21 during the AFS annual business meeting, a highlight of the 86th Casting Congress and Exposition held in Chicago April 19-23. The award is made "for significant technical contributions to the industry in the areas of metal finishing and sand reclamation and for long service to the technical purposes of the Society."

Ray, a long-term member of the Society, has served as chairman and member of the AFS Sand Reclamation Committee, as well as serving as a member of the AFS Research Board from 1975 through 1980.

Congratulations, Ray!



FINE TUNING OUR MANAGEMENT SKILLS . . .

Over the last few months, Wheelabrator-Frye supervisors have been involved in a highly concentrated two-day Management Development Program which was developed for us by Sterling Institute in Washington, D.C.

The program is designed to help our supervisory and management staff fine tune their management skills in dealing realistically and effectively with the critical aspects of their jobs.

Through a unique system of self-assessment and the implementation of practical action plans, we look for the program to spark improvement in individual and organizational productivity.

DISCUSSIONS SCHEDULED . . . On Tuesday, members of U.A.W. Local 995 approved, by a 70 percent majority, to allow their Bargaining Committee to reenter discussions with the company.

Union President **Stan Bober** and Industrial Relations Director **Ralph Sanford** expect to have intense negotiations scheduled to begin late next week and by mutual agreement will conclude at midnight, Friday, May 14.

Stan commented, "The Union is committed to doing its part in keeping Wheelabrator in Mishawaka and we believe many positive things can come."

CREDIT UNION NEWS . . . At the annual meeting of the WFI Credit Union the following were elected to fill the posts named: **Al Skwiercz**, **Delores Burtsfield**, Board of Directors; **Norma Crider**, **Ben DeLaurelle**, Credit Committee.

LUCKY \$\$\$ WINNERS . . . Prize winners at the Athletic Smoker drawing were: **Dwight Arndt** (\$100), **Bud Minegar** (\$50), and **Art Webber** (\$25).

ON THE CALENDAR . . .

- May 8** **Christmas Basket Benefit Car Wash.** Sponsored by the Julianna Club, the car wash will take place in the parking lot of the National Bank & Trust, corner of Grape and Cleveland Roads (State Road 23) across from University Park Mall. (Raindate: Saturday, May 15.)
- May 25** **U.A.W. Retirees Spring Dinner.** BK Club, Mishawaka. Cocktails 6:30 p.m., dinner 7:00 p.m.
- May 31** **Memorial Day.** Plant closed.
- August 14** **Baseball Bus Trip.** Sponsored by the Athletic Association, circle your calendars to see the White Sox play the Yankees. Details to follow.

Editor's Note: With his permission, we would like to share with our readers the following letter written by recent retiree **Bill Fore:**

Dear Friends,

Friday I cried and I was embarrassed. All of the things that I had experienced in the last 42 years seemed to come back to me, and I could not cope with it. I would like to tell you some of the things I was thinking about.

I started here in 1940 as a spray painter in the same department that I am leaving today. I was also a shipper and a truck driver. In 1942 I got married, became a charter member in our union and got drafted into the Army. I was gone for four years. When I came back I worked as a shipper, and then to the Machine Shop as an assembler, also a union steward. From there I became a Foreman in North Shipping.

The people I had working for me saved me as a Foreman. I think my department has always been the whole plant. I've been to about all of you at some time or other for your know-how and your help. No one ever let me down and I remember that.

I've had some hard times here but I have had many, many good times and a lot of fun.

Now it is my time to go and I know why I cried and I am not embarrassed.

I have 42 good years at Wheelabrator. I have never been layed off, I never missed a paycheck, I raised my family, I paid for my house, my hospital and doctor bills were paid, I got my vacation every year, I received a Christmas gift every year and many other things.

Now I can retire early and still live a very comfortable life, thanks to the Wheelabrator savings plan and all of the other benefits they have provided. I feel very lucky and very grateful.

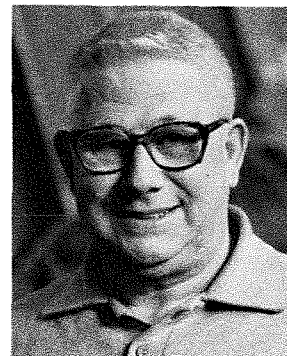
I hope everyone of you will get to retire from Wheelabrator and get to experience the feelings that I had Friday at my breakfast.

Times are a little tough right now, but hang in there and don't give up on Wheelabrator. Things will get better and the old place is worth fighting for.

Good luck to all of you, and I will never forget you.

Thanks for everything.

(signed) Bill Fore



FIRST QUARTER RETIREES HONORED...

A photo memento of retirement festivities — with thanks and good wishes — to our first quarter salaried retirees: **Bill Fore**, General Foreman-Shipping, 41 years of company service; **Bill Geist**, Foreman-Steel Fab, 41 years; **“Duke” Mallory**,

Manager, Production Planning & Technical Development-Marketing, 16 years; **Matt Rutkowski**, Buyer-Purchasing, 24 years; **Margaret Sawyer**, Executive Secretary-Marketing, 45 years; **Ted Wagner**, Engineer-Engineering, 22 years of service.



Bill Fore



Bill Geist



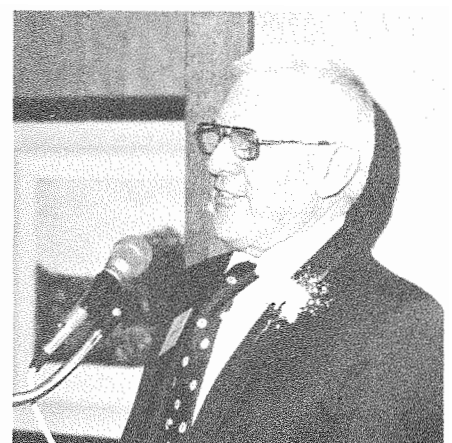
“Duke” Mallory



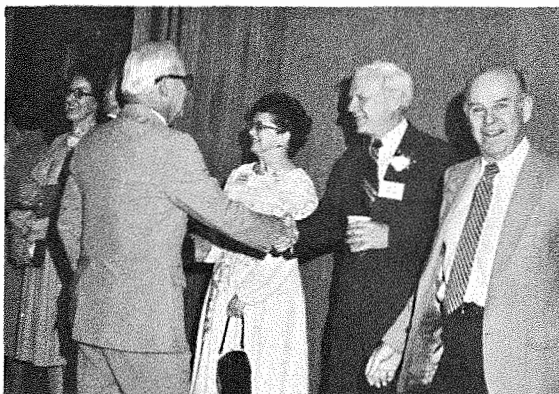
Matt Rutkowski



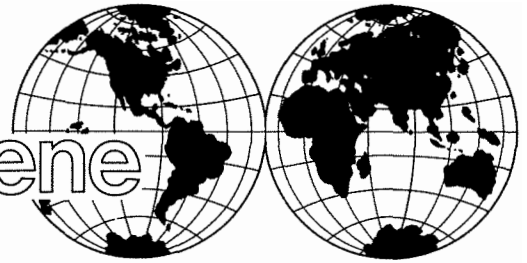
Margaret Sawyer



Ted Wagner

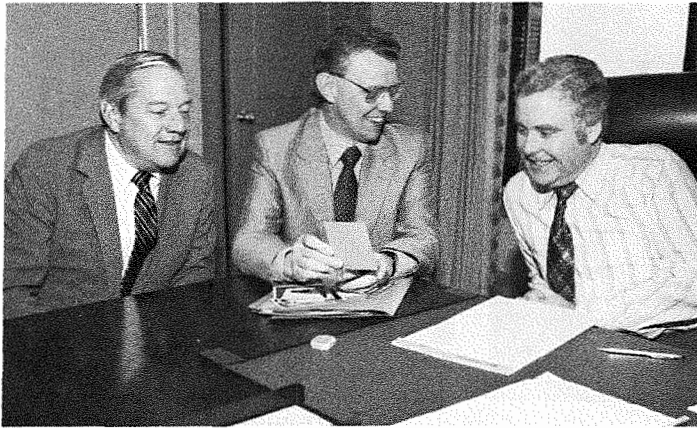


The International Scene

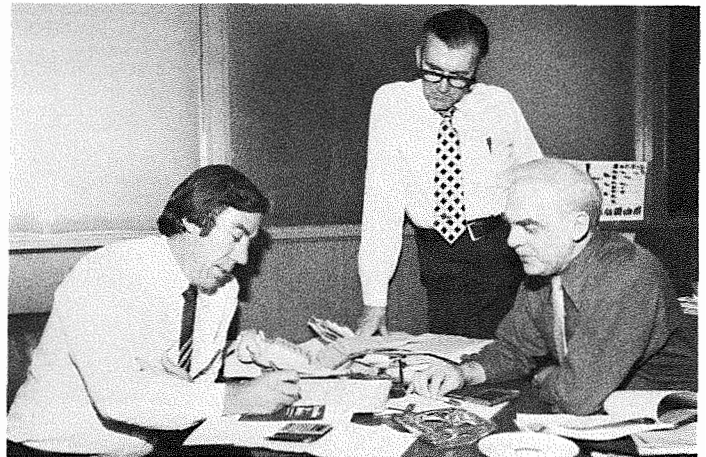


INTERNATIONAL FRIENDS VISIT MISHAWAKA ...

A number of our international friends who attended the '82 Foundry Show held at Chicago's McCormick Place, traveled to Mishawaka last week to meet with associates here.



Bill MacMillan (center), Deputy Managing Director, Tilghman Wheelabrator and M.C.S.D. vice presidents **John Burlingame** (l) and **Mike Buckley** (r).



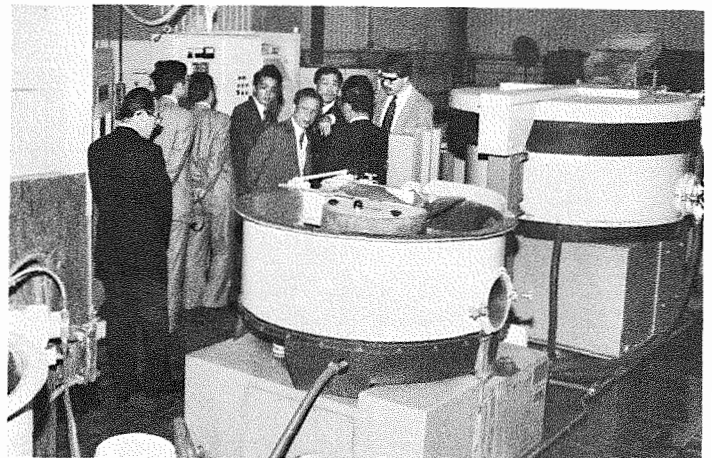
Mike Robertson (l), General Manager of Tilghman South Africa, discusses the assistance he received from Mishawaka on a steel structural application with International Administrator **John Stewart** (center) and **Jim Fuson** (r), International Technical Liaison-Engineering.

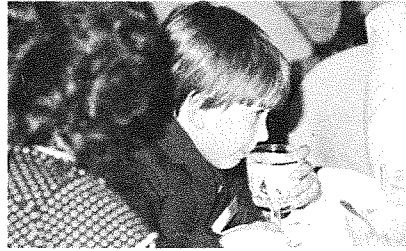
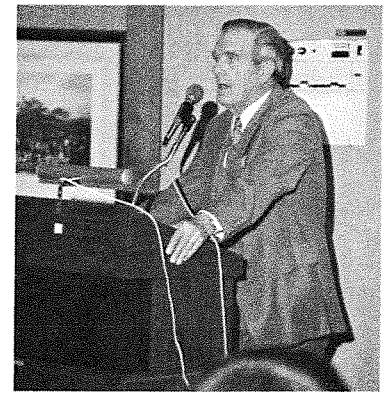


Bruno Giraudy (r), Chairman of the Board, Wheelabrator-Allvard, our French joint venture company, met with Technical Director **Charlie Carlin** (center) and Plant II Manager **Don Rumpler** (l) to discuss technical matters and the upcoming international abrasives conference.



▶
Taking a tour of our facility, as well as that of Dodge Manufacturing, were a group of Japanese foundrymen — many of whom were from our affiliated companies Sintobrotor and Sintokogio.





THE FOUNDRY GANG BIDS FAREWELL TO "RED" . . . Best wishes to Vander "Red" Hunt for a long and happy retirement. Red, Heat Treat Control Operator, retired March 31 with 18 years of company service.



WHEELABRATOR'S MAN ABOUT TOWN — JOHN HARRIS — RETIRES HIS WHEELS . . .

Farewell and best wishes to **John Harris**, Personnel Services Specialist, who retired April 1 with 18 years of company service. On camera — John and some of his well wishers.



NANCY EDWARDS BPW REPRESENTATIVE . . .

Accounting's **Nancy Edwards** represented the Mishawaka Chapter of the Business and Professional Women's Club in the Young Careerist speakoff held during the spring district meeting late last month.

Nancy, a 1976 graduate of I.U., with a bachelor of science degree in accounting is a product accountant in our Balcrank Division.

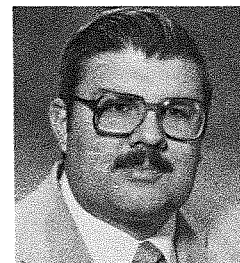


Nancy Edwards

NEW ASSIGNMENTS . . . Congratulations to:



Clyde Hickman
Manager-Shipping,
Receiving, Warehousing
& Transportation



John Mow
Manager-
Manufacturing
Engineering

Published monthly by and for employees of Materials Cleaning Systems Division.

Wheelabrator-Frye Inc.
400 South Byrkit Avenue
Mishawaka, Indiana 46544

Del Tenney, Editor Ext. 465